

**GENTLE  
SIFTING  
ALMOST LIKE  
MANUAL ONE**



**Flour sifter**

**PM-11 / PM-12**





# SPECIALLY FOR YOUR NEEDS

## Flour sifter

The flour sifter manufactured by MECH-MASZ Żnin is a new generation device featuring an innovative sifting solution - 'gentle sifting almost like manual one'.

The special 'cradle' sifting system based on the pendulum principle and available only in PM-11/PM-12 sifters eliminates two fundamental flour sifting issues:

- It does not cause excessive dusting.
- It neither liquidises flour nor disturbs its structure, showing an advantage over other competitive solutions based on the centrifugal force. This automatically translates into better product quality.



discharge pipe  
may be elevated



minimum  
dusting



50 kg bag  
in 60 seconds



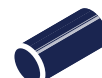
simple and  
safe control



perfectly selected  
sieve mesh diameter



mobile  
structure



AISI 304  
stainless steel

# Key functions

Owing to this technology (cradle) sifted flour is very well aerated which brings measurable benefits in the further process.

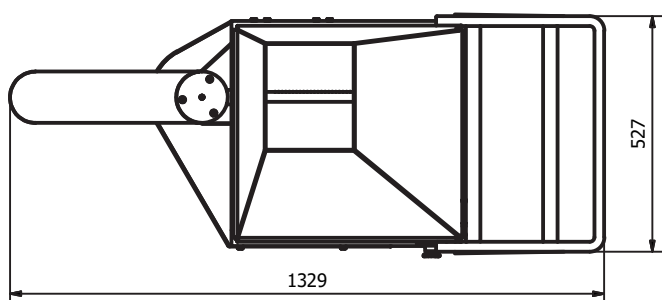
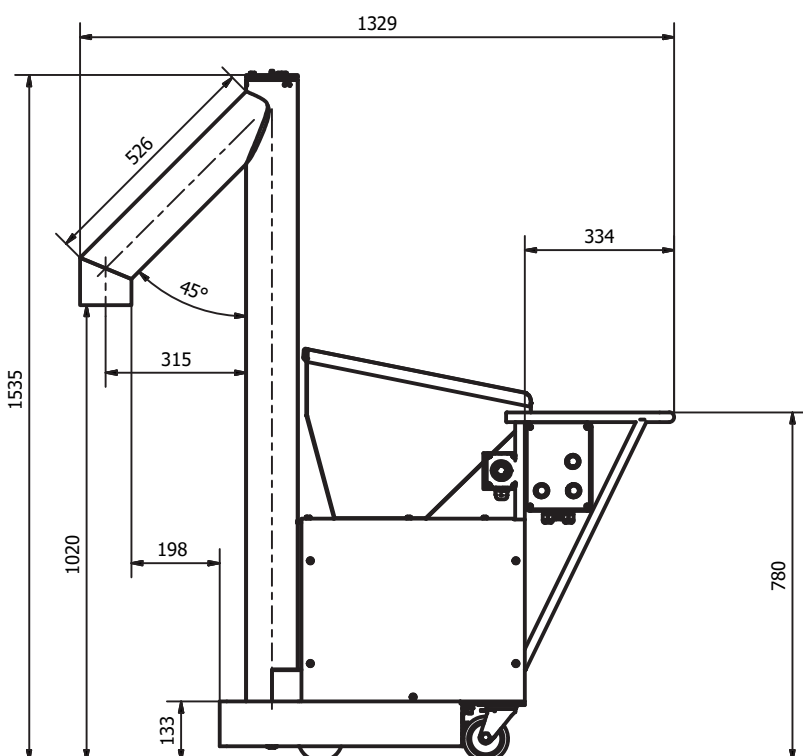
A compact design – footprint reduced to a minimum.

Use of swivel castors for easy movement.

Simple moulds – easy to clean.

At the customer request:

- a change of the standard sieve mesh size as needed, adopting the device for sifting another products
- a change of the flour lifting height to 3.5 m



## TECHNICAL DATA

**Capacity:** up to 2 t/h, 50 kg bag in approx. 60 seconds

**Dimensions:** 530 x 133 x 154 H [cm]

**Power:** 0,75 kW

**Power supply:** 400 Volt, 50Hz

**Weight:** 120 kg

**Feed height:** 102 [cm] (standard)



# ROBUST DESIGN



## Functional description:

1. Put a bag with flour on the holding shelf.
2. Fill the hopper with flour.
3. The flour is sifted as it falls onto the movable sieve.
4. The sifted flour is moved to the catchers placing material onto the screw.
5. The flour is transported to the outlet by the screw.
6. The flour is fed directly to the bowl.

